

# SOLIX RS40

## DIY Balcony Solar Power System

Tilt Mount Kit

2er-Pack

415W Photovoltaic

*“Extreme easy & safe.”*

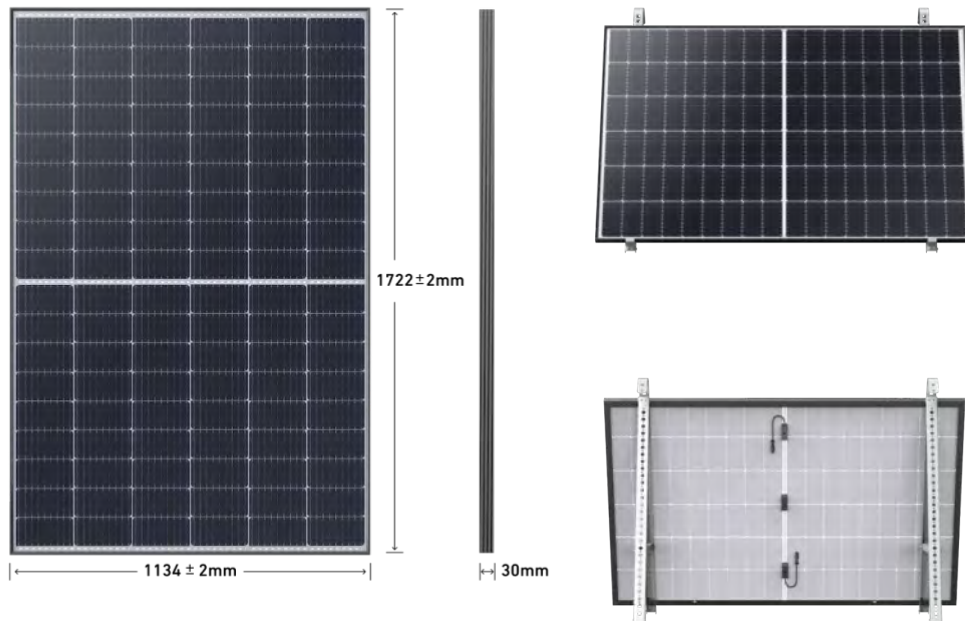
# Specifications

## Product Model

PN	A5500
Model Name	RS40 Rigid Solar Panel

## Electrical Characteristics(STC)

Maximum Power- Pmax(W)	415
Open Circuit Voltage - Voc(V)	37.45
Short- Circuit Current - Isc(A)	14.02
Voltage at Pmax -Vmp(V)	31.61
Current at Pmax - Imp(A)	13.13
Module Efficiency	21.30%
Power Tolerance(W)	(0, +4.99W)
Maximum System Voltage(V)	1500Vdc (IEC)
Maximum Series Fuse Rating (A)	25A



# Specifications

## Mechanical Specifications

External Dimensions	1722x1134x30mm
Weight	20.5Kg
Solar Cells	Mono crystalline 108(2x54)
Front Glass	AR Coated Glass
Frame	Anodized aluminum alloy
Junction Box	IP68
Connector	MC4 Compatible
Mechanical Load	Front Side Max. 5400Pa, Rear Side Max. 2400Pa

## Temperature Characteristics

Pmax Temperature Coefficient	-0.350%/°C
Voc Temperature Coefficient	-0.275%/°C
Isc Temperature Coefficient	+0.045%/°C
Operating Temperature	-40~+85°C

## Certification & Compliance

Tested by TUV NORD	CE LV Directive 2014/35/ EU
Tested by TUV NORD	IEC 61215, IEC 61730

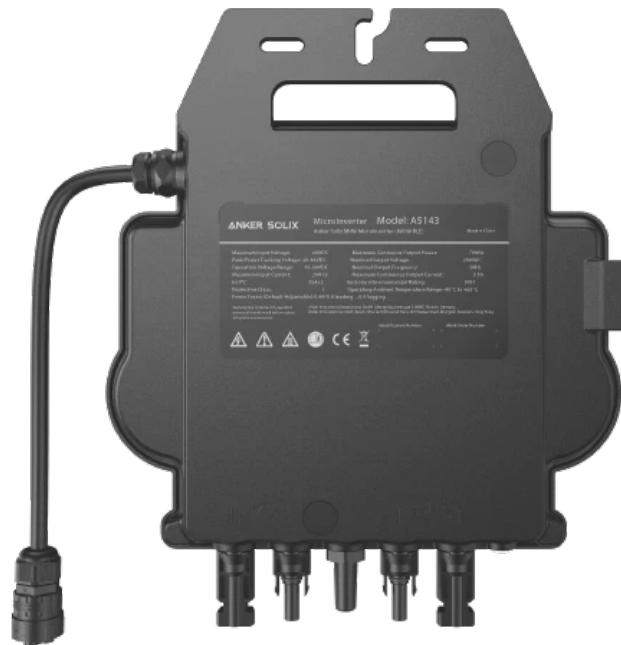
# Specifications

## Product Model

PN	A5143
Model Name	Anker SOLIX MI80 Microinverter (800W BLE)

## System Specs

CEC Efficiency	97.3%
Night Time Tire Loss(W)	0.02
Over/Under Voltage Protection	Yes
Over/Under Frequency Protection	Yes
Anti-Islanding Protection	Yes



# Specifications

## Power Inputs(DC)

Max Recommended PV Power(Wp)	700x 2
Max DC Open Circuit Voltage(Vdc)	60
Max DC Input Current (Adc)	20 x 2
MPPT Tracking Accuracy	>99.5%
MPPT TrackingRange(Vdc)	28-45
Isc PV (absolute maximum) (Adc)	25 x 2
Maximum Inverter Backfeed Current to the Array (Adc)	0

## Power Outputs(AC)

Max AC Output Power(Wac)	800
Nominal Power Grid Voltage (Vac)	230
Allowable Power Grid Voltage(Vac)	configurable*
Allowable Power Grid Frequency(Hz)	configurable*
THD	<3%(at rated power)
Power Factor	>0.99(at rated power)
Rated Output Current (Aac)	2.61/3.5
Current (inrush)(Peak and Duration)	24A, 15us
Rated Frequency (Hz)	50

## Certification & Compliance

Grid Code Compliance\* (Refer to the label for the detailed grid code compliance)

60VE-Richtlinie R 25:2020  
VDE-AR-N 4105:2018  
DIN VDE V 0124-100 (VDE V 0124-100):2020

# Specifications



**Schuko Cable**

PN	A5602
Quantity	1
Connector	EN100 to Schuko
Length	5m



**QC4 Cable**

PN	A5600
Quantity	4
Connector	QC4 Female to QC4 Male
Length	1.5m

# Specifications



## Solar Panel Tilt Mount

PN	A5650
Quantity	4
Material	Carbon Steel
Net Weight of a Set	17.5kg

## Main Components' Size

U-shaped Rack	217mm*45mm*1.5mm
Vertical Support Scaffolding	1100mm*110mm*1.5mm
Solar Panel Support Beam	1200mm*108mm*1.5mm
Lower Support Beam	618mm*102mm*1.5mm
Fastening Clamp	130mm*48mm*1.5mm
Limit Supports	92mm*40mm*2mm